



Helplines and local mental health services

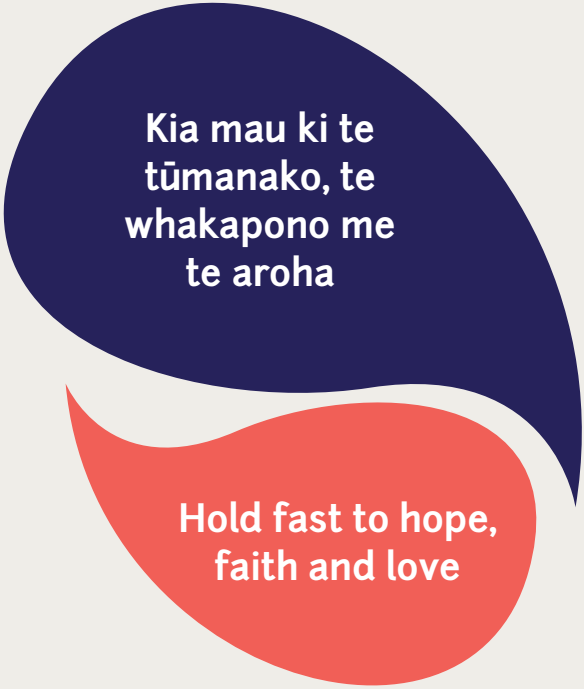
MARCH 2022

Tēnā koe

In this resource you will find a directory of helplines and local mental health service contact details.

To help connect people with their local communities for specific or wider support, this resource includes a blank page for you to fill in with any local helplines and personal supports.

It's okay to reach out for help - never hesitate if you are concerned about yourself or someone else.



**Kia mau ki te
tūmanako, te
whakapono me
te aroha**

**Hold fast to hope,
faith and love**

In a crisis or emergency

If someone has attempted suicide or you're worried about their immediate safety, do the following:



Call your local mental health crisis assessment team (numbers are on page 8 of this booklet) or go with them to the emergency department (ED) of your nearest hospital



If they are in immediate physical danger to themselves or others, **call 111**



Stay with them until support arrives



Remove any obvious means of suicide they might use (e.g. ropes, pills, guns, car keys, knives.)



Try to stay calm, take some deep breaths. Let them know you care



Keep them talking: listen and ask questions without judging



Make sure **you are safe**

More information and support

For more information and support, talk to your local doctor, medical centre, hauora, community mental health team, school counsellor or counselling service.

If you don't get the help you need the first time, keep trying.

Below is a list of some services available which offer support, information and help.

For counselling and support

- **Lifeline**
0800 543 354
(0800 LIFELINE)
or free text 4357 (HELP)
- here to help
- **Samaritans**
0800 726 666
- for confidential support for anyone who is lonely or in emotional distress
- **Depression Helpline**
0800 111 757 or free text 4202
- to talk to a trained counsellor about how you are feeling or to ask any questions
www.depression.org.nz
- **Healthline**
0800 611 116
- for advice from trained registered nurses
- **Covid-19 Healthline**
0800 358 5453
- for Covid-19 health advice and information

Need to talk?
Free call or text 1737
Talk with a trained counsellor, anytime.

All services are free,
and are available
24 hours a day,
seven days a week
unless otherwise stated.

For children and young people

- **Youthline**
0800 376 633,
free text 234,
email talk@youthline.co.nz
or online chat at www.youthline.co.nz (available 4.30pm – 10pm)
– for young people and their parents, whānau and friends
- **What's Up**
0800 942 8787
(0800 WHATSUP)
call (11am – 11pm) or online chat at www.whatsup.co.nz (11am – 10.30pm) every day.
– for 5-19 year olds
- **www.auntydee.co.nz**
– a free online tool for anyone who needs help working through problems
- **www.thelowdown.co.nz**
Visit the website or free text 5626
– support for young people experiencing depression or anxiety
- **www.sparx.org.nz**
– a self-help tool that teaches young people the key skills to help combat depression and anxiety
- **Aroha chatbot**
tiny.cc/aroha
– a chatbot to help young people (13–24 years) cope with stress and maintain social connections

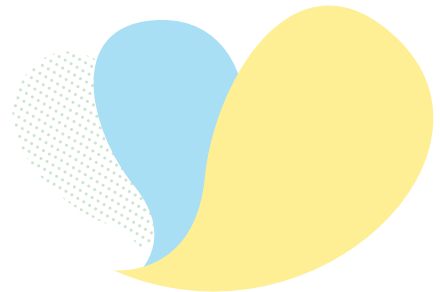


Help for Deaf and hard-of-hearing people

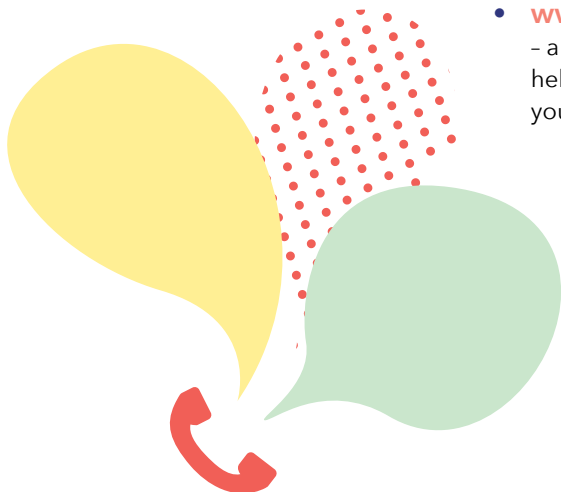
- **NZ Relay**
www.nzrelay.co.nz
– helps users to connect with services over the phone
- **NZ Police 111TXT**
www.police.govt.nz
– Register with the New Zealand Police for the 111TXT service.
- **TXT, messenger, online chat**
– many services in this brochure offer txt, messenger or online chat services.
- **depression.org.nz/get-better/your-identity/deaf**
– more help and information for the Deaf community

For help with specific issues

- **0508 TAUTOKO Suicide Crisis Helpline**
0508 828 865
- if you, or someone you know, may be thinking about suicide, call for support from a trained counsellor
- **OUTLine**
0800 688 5463
(0800 OUTLINE)
- for sexuality or gender identity issues 6pm - 9pm
- **Alcohol Drug Helpline**
0800 787 797,
free text 8681
or online chat at alcoholdrughelp.org.nz
- for people dealing with alcohol or other drug problems
- **Gambling Helpline**
0800 654 655
free text 8006
or online chat at www.gamblinghelpline.co.nz
- for help if you are gambling or are concerned about someone else's gambling
- **He Waka Tapu**
0800 439 276
(0800 HEYBRO)
- for men who feel they are going to harm a loved one or whānau member
- **Vaka Tautua**
0800 652 535
(0800 OLA LELEI)
- free national Pacific helpline.
Mon-Fri 8.30am - 5pm
- **Anxiety Helpline**
0800 269 4389
(0800 ANXIETY)
- for people who experience all forms of anxiety and their families and friends
- **Aoake te Rā**
0800 000 053
- free counselling for people bereaved by suicide. See www.aoketera.org.nz
- **Rural Support**
0800 787 254
- for people in rural communities dealing with financial or personal challenges

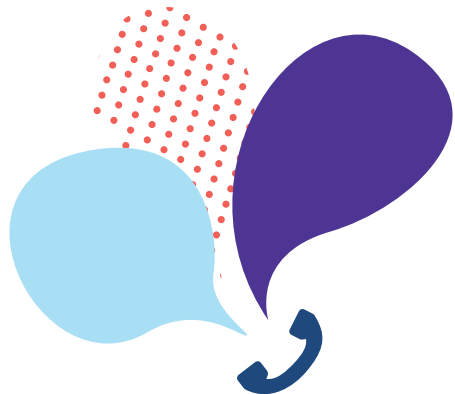


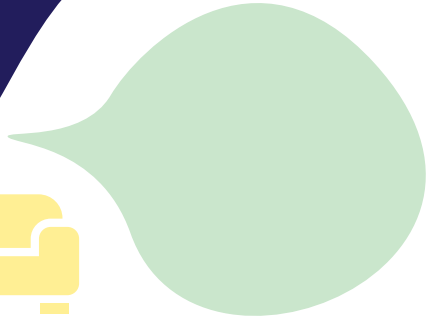
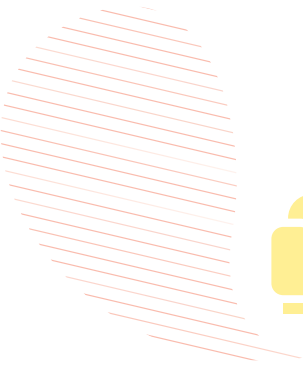
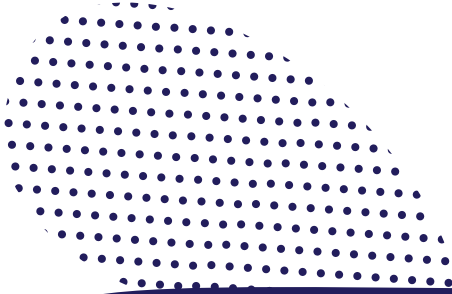
- **PlunketLine**
0800 933 922
- support for parents, including mothers experiencing post-natal depression
- **Women's Refuge Crisis Line**
0800 733 843
(0800 REFUGE)
- for women living with violence, or in fear, in their relationship or family
- **Rape Crisis**
0800 883 300
- for support after rape or sexual assault
- **24/7 HELPLine**
0800 623 1700
www.helpauckland.org.nz
- support for sexual abuse survivors
- **Shakti Crisis Line**
0800 742 584
(0800 SHAKTI)
- multi lingual helpline for migrant or refugee women living with family violence
- **EDANZ**
0800 233 269
www.ed.org.nz
- for information, support and resources about supporting someone with an eating disorder
- **Asian Family Services**
0800 862 342
help@asianfamilyservices.nz
- provides professional, confidential support in multiple languages to Asians living in New Zealand, Monday to Friday 9am - 8pm
- **www.smallsteps.org.nz**
- a collection of **online tools** to help you calm your mind, manage your stress and lift your mood



For families, whānau and friends

- **Skylight**
www.skylight.org.nz
0800 299 100
- for support through trauma, loss and grief (8.30am - 4.30pm weekdays)
- **Yellow Brick Road**
0800 732 825
(Northern Region)
0800 555 434
(Central North Island)
0800 876 682
(South Island)
- for families and whānau supporting a loved one who has a mental illness
- **The Grief Centre**
0800 331 333
www.griefcentre.org.nz
- for support for all forms of loss, grief, trauma or difficult change
- **Victim Support**
0800 842 846
- 24 hour support for people affected by crime, trauma and suicide
- **Le Va**
www.leva.co.nz
www.facebook.com/LeVaPasifika
- information and support for Pasifika families on mental health, addiction and suicide prevention
- **After a Suicide**
www.afterasuicide.co.nz
- a website offering practical information and guidance to people who have lost someone to suicide
- **Mental Health Foundation**
www.mentalhealth.org.nz
- for more information about supporting someone in distress, looking after your own mental health and working toward recovery





Mental health crisis team contact numbers

Northland	Topuni to North Cape	Whangārei (09) 430 4101 ext 3537 Kaipara (09) 439 3330 ext 65401 Mid North 0800 643 647 Far North (09) 408 9187 After Hours 0800 223 371
Waitematā	Wellsford to North Shore	(09) 486 8900 North Shore (09) 487 1414 Henderson (09) 822 8601
Auckland	Auckland City	Central Auckland 0800 800 717
Counties Manukau	South Auckland to Te Kauwhata	South Auckland (09) 261 3700
Waikato	Coromandel, Hamilton to National Park	Hamilton 0800 505 050
Bay of Plenty	Tauranga, Whakatāne to Te Kaha	Tauranga 0800 800 508 Whakatāne 0800 774 545
Tairāwhiti	Hicks Bay to Gisborne	Gisborne (06) 867 2435 0800 243 500
Lakes	Rotorua, Taupō, Tūrangi	Lakes 0800 166 167
Hawke's Bay	Wairoa, Napier, Hastings, Waipukurau	Napier, Hastings 0800 112 334
Taranaki	New Plymouth to Waverly	New Plymouth 0508 292 467
Whanganui	Ohakune, Whanganui to Bulls	Whanganui 0800 653 358

Mid Central	Palmerston North to Peka Peka	Mid Central 0800 653 357
Wairarapa	Masterton to Martinborough	Wairarapa 0508 432 432
Hutt Valley	Lower and Upper Hutt	0800 745 477
Capital & Coast	Kāpiti to Wellington	0800 745 477
Nelson Marlborough	Nelson - Tasman Marlborough Golden Bay area	Nelson (03) 546 1421 After hours (03) 546 1800 Marlborough (03) 520 9907 After hours (03) 520 9999 Golden Bay (03) 525 7647
Canterbury	Kaikōura to Ashburton	Christchurch 0800 920 092
West Coast	West Coast, South Island	Greymouth 0800 757 678
South Canterbury	Timaru, Mt Cook, Tekapo, Temuka, Waimate	Timaru 0800 277 997
Southern	Dunedin, Milford Sound south to Stewart Island	0800 467 846 Press 1 for Southland Press 2 for Otago

Phone numbers are subject to change. If you are concerned about someone and the number you are calling is not working, **call 1737** and ask to be put through to the crisis team in your area. If you're in danger right now, please call 111.

For more local and national services

- **Need to talk?**
Free call or text 1737
Talk with a trained counsellor, anytime
- **Healthline**
0800 611 116
For advice from trained registered nurses, including information about local health services throughout New Zealand
- **Family and Community Services National Directory**
www.familyservices.govt.nz/directory
For information about community services that can help with issues relating to parenting, special needs, family support, family violence, custody and access, child behaviour, life skills, counselling, addiction, sexual abuse, grief and loss
- **Māori Health Provider Directory**
www.health.govt.nz/your-health/services-and-support/health-care-services/Māori-health-provider-directory
There are a number of Māori health providers contracted to District Health Boards, or iwi and kaupapa Māori organisations that work independently throughout Aotearoa. Contact a provider in your area to find out more about what is available locally
- **Healthpoint**
www.healthpoint.co.nz
Up-to-date information about healthcare providers, referral expectations, services offered and common treatments

For more information about support and services in your area, contact the Mental Health Foundation Resource and Information Service:

www.mentalhealth.org.nz
info@mentalhealth.org.nz



ISBN 978-1-877318-95-5 (PDF)

HE Code: HE2546

Updated: March 2022